



# THE WISE OWL CAR

## Newsletter of the Wisconsin Southeastern Division of the National Model Railroad Association



November 2013

### THE HEAD OWL HOOTS

By Joe Russ, Superintendent

Hi all,

The WISE Division's revised constitution was approved by the membership at the October 20 meet by a vote of 32 in favor and four against. A big thank you to the Constitution & Bylaw committee for their work on this.

On October 5 the Division hosted the Boy Scout Railroad Merit Badger program. Paul Podlaski and Gary Children have done a great job putting this on the past few years. With the help of Ted Lewtas, Mark Willmering, Ken Thopson, Tim Thur, Bonnie and Fred Janke and myself, 38 scouts received their merit badge. Thank you to all who helped.

And I have a call out for a few more volunteers. With the changes in the Division's constitution, we will be having board elections every year and thus need people to serve on the nominating/election committee. Responsibilities will be to find candidates and run the elections at the annual meeting. We are also in search of a Division webmaster to run and update the web site. Please contact me if you are interested in either position.

Finally, Trainfest is literally just around the corner as you receive this. The Trainfest committee has been hard at work for what should be another great show. Hope to see all of you there.

The WISE Owl Car is published by the Wisconsin Southeastern (WISE) Division of the National Model Railroad Association (NMRA). Subscription is free to all NMRA members residing within the boundaries of the WISE Division.

The Wisconsin Southeastern Division, Inc. does not offer any warranties or guarantees, nor assume any liability from the information contained in this publication.

Permission is granted to use news items in other publications provided credit is given to the Owl Car and author.

Trainfest and the Trainfest logo are registered trademarks of the WISE Division, NMRA, Inc.

Please send any comments, information, or editorials to the editor.

Editor: Harry Grieshaber

Email: [grieshab@gmail.com](mailto:grieshab@gmail.com)

Phone: 414-915-2102

### Change of Meetings Locations

Due to a scheduling error Joe has confirmed we have signed contracts to meet at the following locations other than the Best Western-Brookfield Hotel. The December thru April dates are as follow:

**December 1, 2013** -  
Country Springs -  
Pewaukee

**January 19, 2014** -  
Country Springs -  
Pewaukee

**February 16, 2014** -  
Best Western -  
Brookfield

**March 16, 2014** - Veter-  
an's Terrace - Burlington

**April 27, 2014** - Country  
Springs - Pewaukee

Please see the map on  
the last page for direc-  
tions to the event.

**Membership** By Neal Michel, Director

Meet Attendance: If you attend one of our Division meets, please be sure to sign in and receive a chance at a great door prize. With a swap area, clinics, contests and layout tours there is something for everyone.

6-Month Membership Only - \$9.95: ( This membership offer is for new members and those who have not been members for two years or more.) Membership application forms are available at the sign-in table.

**Layout Tours** by Mike Carlson

Anyone desiring to open their layout for tours on Wise Division Meet days please contact the new Layout Tour Chairman Mike Carlson at [262-370-9321](tel:262-370-9321). We need layouts for the October 20th, December 1, January 19th, February 16, March 16, and April 27, to seeing

**AP PROGRAM** by LaRoye Chisley, Chairperson

We will be doing AP judging at the October Division Meet and if any person has anything to be judged please bring it to the meet with all your paper work for that item.

**Bus Trip** by Art Oseland, Chairperson

Bus trip to Mad City Train Show, Feb 15, 2014. \$35.00 Per Person includes admission to show, coffee, soda ,water and donuts on the bus. Pick up points are Park & Ride lots: College Av. Southwest lot 7a.m; I-94 and 76th. St. 7:15a.m.;I-94 Barker Rd. ( Goerke's Corners) at 7:30a.m. Arrive at the train show 9 a.m. Depart 3 p.m. Pay at Dec, Jan WISE Meets. More information-Contact Art Oseland at [sueoseland@aol.com](mailto:sueoseland@aol.com), or Hp: [414-764-5375](tel:414-764-5375)

**BOARD OF DIRECTORS**

<b>Superintendent:</b> Joes Russ Email: <a href="mailto:jross@execpc.com">jross@execpc.com</a>	(262)408-1946 16800 W. Shadow Drive New Berlin, WI 53151
<b>Assistant Superintendent :</b> Ken Jaglinski	(414)355-8889
<b>Chief Clerk:</b> Al Lederman	(262)617-6064
<b>Paymaster:</b> Bob Sherman	(262)790-9830
<b>Trainfest :</b> John Tews– MMR 313	(262)820-3566
<b>Wise Owl Editor:</b> Harry Grieshaber	(414)915-2102
<b>Contests:</b> Bonnie Janke	(262)392-9698
<b>Achievement Program:</b> LaRoye Chisley	(414)352-3546
<b>Layouts:</b> Mike Carlson	(262)370-9321
<b>Membership:</b> Neal Michel	(414)817-1278
<b>Youth Club:</b> Mark Hintz	(262)820-3566
<b>Picnic:</b> Mark Willmering	(414)438-7231
<b>Bus Trip:</b> Art Oseland	(414)764-5375
<b>Video Library:</b> Burnell Breaker	(262)939-9193
<b>Clinics:</b> Ed Kofroth	(414)425-7945
<b>Directors at Large</b>	
Richard Cecil (414)236-5386	Cedor Aronow (262)242-0108
Garv Children (414)327-1666	Ed Varick (414)761-2068

**20 Year Quest for Rail By Jerry Thompson**

Today was a very important day for me personally! I stopped by the Mayor's office this morning to take care of some company business, and we struck up a conversation regarding Railroad Rail. He suggested we secure a few pieces of old rail (with dates if possible) before all the "old" rail is removed from the old C&NW Line slated for demolition by the end of this year. (We should be able to purchase some from the demolition firm) We could make bookends out of them, sell to interested people and any proceeds would be donated to the Plymouth Historical Society. We were interesting in obtaining old rail, and as I was on my way to Sheboygan anyway, I thought I would stop at a few locations and check out some dates on the rails. Well, to my surprise at the second stop I made, I discovered a short length of 39# "PEAR" rail! I have been looking for a piece of this rail for over 20 years, ever since a railroad friend of mine showed me a piece he unearthed on the

Sheboygan to Plymouth line, while running a Jordan Spreader for the C&NW, years ago! You ask, what is "PEAR" rail and why should anyone care? The story begins in 1856, with the incorporation of the Sheboygan & Mississippi Railroad. In 1857 the railroad began construction towards Plymouth, reaching Plymouth in 1859. Now in those, pre-Civil War days, railroad rail was being imported from England. The production of rail in the United States was just getting started, and the better rail came from mills in Europe which had started out by producing "T" rail in the 1840's. By 1856, "PEAR" rail was in full production. The rail which was used on our rail line from Sheboygan to Plymouth had to be ordered in 1856, shortly after the RR was incorporated. Delivery was made in 1857 when the actual construction began. This rail came by ship (that is a "sailing" ship relying on wind power) across the Atlantic Ocean, down the St. Law-

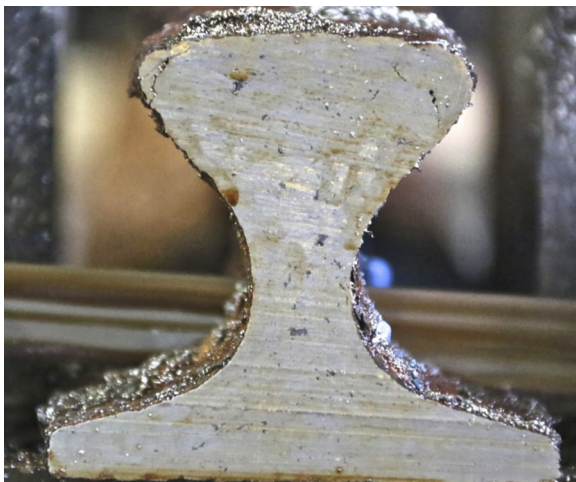
rence Seaway, through the Great Lakes and docking at the wharf in Sheboygan, Wisconsin. The rail was unloaded and moved immediately to the construction site. They reached Plymouth in 1859 and Glenbeulah on March 29, 1860. The line continued on through Fond du Lac and points west, ultimately reaching Marshfield, WI. So why is this rail called "PEAR" rail? I have included two photos of the rail. One showing it being cut on my power band saw and a cut piece with a Quarter in the photo to show you its small size. A piece of this rail when cut off, looks like the shape of an upside down pear cut in half, thus the term "PEAR" rail. You will have to remember the piece of rail I discovered is over 156 years old and the top of the rail was worn down through the years, so the shape is not quite as Pear Like, as it would have been when new. The size of this cross section is, 3 1/8 inches tall, 3 1/2 inches wide at the base and 2 1/4 inches wide at

the ball or head of the rail. Now these sizes are smaller than the originally new rail, due to wear and rusting. This particular piece of rail survived into the 21st Century, as it was being used as a guard rail in a road crossing. If you look closely you can see several flaws in the rail, which would have caused all kinds of problems for the railroad. Most of this "PEAR" rail on our old C&NW line was replaced by 1875, with rail rolled in the USA. Most of the rail after 1870 in this area was produced by the Milwaukee Iron Company, right here in the state of Wisconsin, using iron ore, mined at Iron Ridge, Wisconsin, which is near current day Mayville. This was a fine day! After over 20 years of searching we finally found a piece of "PEAR" rail. History reaching back to England, 156 years ago, right in our back yard!

Jerry Thompson, Railroad Services Coordinator City of Plymouth

(Editor's Note:) The pictures referenced are seen below.

This article was sent to Gary Children, WISE BOD



**Contests** by Bonnie Janke, Chairperson

With weather and other things going on, the numbers were few, at the October meet. We did have some who came prepared to enter our WISE CONTEST. Thanks to those who did enter their items.

May I encourage those who are sitting with things not quite done on work benches, or would want, to work on something that is on the contest category list, to take the time, that is needed to get them ready for our meet on December 1, 2013. We miss you when you don't show

some of the train talents that we have in this WISE Division,

We also want to let you know of the WISE GUYS & GALS Group. They are working very hard to get things done for Trainfest. They are showing some very good talent with their modeling. We are thankful for all the parents who support them.

And as Contest Chair, I would love to see the youth bring and enter our contest at our WISE Meets, each month.

There were many, who did come to see the contest items and asked if more were coming. If there is something that you may need help with get in touch with me and I will try to help you. Or find those who might like to share their talents to help you build your layout or make changes. Hope to see in our contest room with your enteries.

Contest results are found on page 4.

**Here are the categories for upcoming WISE Meets:**

12/1/2013

Motive Power – Steam  
 Passenger Equipment  
 Non- Revenue Freight Equipment  
 Model Photos

3/16/2014

Structures (On and Off Line)  
 Passenger Equipment  
 Freight Equipment  
 Prototype Photos

1/19/2014

Motive Power – Diesel  
 Revenue Freight Equipment  
 Structures (On and Off Line)  
 Train Related Crafts  
 Prototype Photos

4/20/2014

All Categories Featured  
[Complete Category List](#)  
 Motive Power – Steam  
 Motive Power – Diesel  
 Passenger Equipment  
 Non – Revenue Freight Equipment  
 Freight Equipment  
 Structures (On and Off Line)  
 General (Dioramas & Trains)  
 Traction/Electric  
 Model Photos  
 Prototype Photos  
 Train Related Crafts

2/16/2014

Motive Power – Steam & Diesel  
 Traction/Electric  
 General (Dioramas & Trains)  
 Model Photos

## October Contest Results

“BEST OF SHOW”

Structures Category = #701 – Niederman Brewing (Kit Bashed Kit) by Robert Niedermann

### Non- Revenue Freight Equipment

1st Place = #601 – Snow Spreader #89 by Tim Shipman

2<sup>nd</sup> Place = #602 – Frisco Under Body Being Repaired by Dave Poquette

### Structures

1<sup>st</sup> Place = #703 – L Whare House by John Shipman

2<sup>nd</sup> Place = 701 – Niederman Brewing (Kit Bashed Kit) by Robert Niedermann

### Prototype Photo

1<sup>st</sup> Place = #803 – Steam up in Cumberland by Al Lederman

2<sup>nd</sup> Place = #801 – ICE 6413 At Brookfield by John Shipman

### **Best of Show October 2013 by Robert Niederman**



### **Structures October 2013 by L Whare**



### **Non Revenue October 2013 by**



**IT'S NOT TO LATE FOR**

# **TRAINFEST Nov. 9-10**

## **Be a Volunteer**

Volunteers Are Needed For TRAINFEST 2013

Trainfest is arriving on November 9th and 10th. We will again need volunteer help to distribute programs, help with set up and manage other assignments. Please fill out the form below and mail or send an email to Ed Padgett

volunteer@trainfest.com. Email is the best and easiest way for me to follow up with you. Thank you in advance for your help.

We will also need help on Friday, November 8th with directing traffic and other tasks needed to be done. In addition, we need a few people to help with closing the Expo Center. This consists of helping direct the vehicles out of the Expo Center. If you can help, please sign up below, then on Friday locate me, Ed Padgett or Cedor Aronow at the Trainfest office when you arrive.

I need a couple of people to work at the desk as a helper Friday, Saturday and Sunday. If you could help, please let me know. Please add your phone and email.

Yes! I can help at the desk: Name: \_\_\_\_\_ Day \_\_\_\_\_; Time \_\_\_\_\_

Yes! I can help on Friday, November 9th Name \_\_\_\_\_

Phone \_\_\_\_\_ Email \_\_\_\_\_

We will need three people at each of the two doors for the 9am and 11am shifts. One of those volunteers will be Counting children. That will require 6 people for each shift so volunteer. We want to make this a great show.

Yes! I can help distribute programs. Please circle your choice of time(s) you are available to work. Please report to Ed Padgett or the personnel at the Trainfest office fifteen minutes prior to your shift start. If you are in the building prior to your start time, you may check in early. That helps us know that the shifts are filled.

SATURDAY, NOVEMBER 9TH  
OPENING

SUNDAY, NOVEMBER 10th OPENING

AFTERNOON SHIFT 1

AFTERNOON SHIFT 1

AFTERNOON SHIFT 2

AFTERNOON SHIFT 2

CLOSING

CLOSING

Name Address

Mail form to: Ed Padgett

City, State, Zip mail

S57, W22641 Woodside Ct Waukesha, WI 53189

OR send Email to: volunteers@trainfest.org Or epadgett@powercom.net

<b>2013 Meet &amp; Events Dates</b>	
Nov. 9-10	TRAINFEST– Wis. State Fair Park Expo
Dec. 1	Country Springs Hotel– Pewaukee
Jan. 19 2014	Country Springs Hotel– Pewaukee
Feb. 16, 2014	Best Western Hotel Brookfield
Mar. 16, 2014	Veteran's Terrace– Burlington
April 27, 2014	Country Springs Hotel– Pewaukee

---

**WE'RE ON THE WEB!**

[WWW.WISEDIVISION.ORG](http://WWW.WISEDIVISION.ORG)

---

**WE'RE ON FACEBOOK!**

[WWW.WISE DIVISION.NMRA](http://WWW.WISE DIVISION.NMRA)

---

## Other Model RR Events in Our Neighborhood

# Central Wisconsin Model Railroaders Ltd 17<sup>th</sup> Annual Artic Run Model Railroad Show and Sale

Sponsor: Central Wisconsin Model Railroaders Ltd

Event Start Date & Time: Saturday 1/18/2014 - 9 AM to 5 PM

Sunday 1/19/2014 – 10 AM to 4 PM

Cost: \$3.00 Adults \$2.00 Ages 11 – 16 Free: Ages 10 and under

### Description:

Fun for the whole family. Enjoy a convention center full (16,000 square feet) of trains, trains and more trains. Featured are operating model railroad layouts (some as large as 24' x 52'), a hands-on Thomas the Tank Engine layout for the children, swap/sales tables, hobby shop dealers and vendors. If you are just interested in watching trains, thinking of getting started in the hobby, or a seasoned model railroader there is something here for everyone. On a cold January week-end there is no better place to be than among friendly fun-loving model railroaders.

The show is sponsored by the Central Wisconsin Model Railroaders Ltd (a non-profit educational organization). Activities include promoting model railroading as a life long hobby and family activity, supporting community events and the Portage County Historical Society.

Event Venue/Location: Holiday Inn Convention Center

1001 Amber Avenue, Exit 158 East, I-39/51 @ Hwy 10. One mile east on Hwy 10 to Elizabeth Avenue (just past Fleet Farm).

Event Venue/Event Contact: Phil Gjevre, 1828 Marys Drive, Stevens Point, WI 54481 (715) 341-8228,  
[phil.jane.gjevre@charter.net](mailto:phil.jane.gjevre@charter.net)

Event Website Address: [www.trainweb.org/cwmm](http://www.trainweb.org/cwmm)